

T - Clamp (base)

 Preferred type, readily available (codes marked in red)



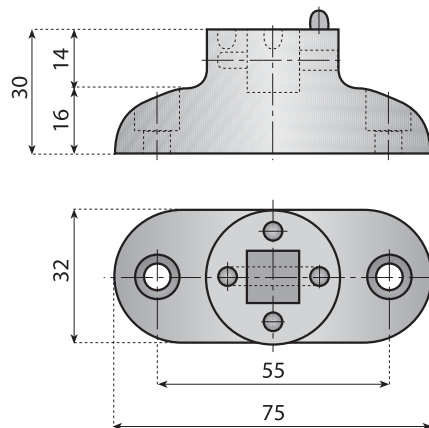
T-MOBILE CLAMPS

Features: it mounts to the side of equipment to provide support for light duty application.

Use: with single cross block

Material: reinforced polyamide with stainless steel bolts.

Supply: unassembled

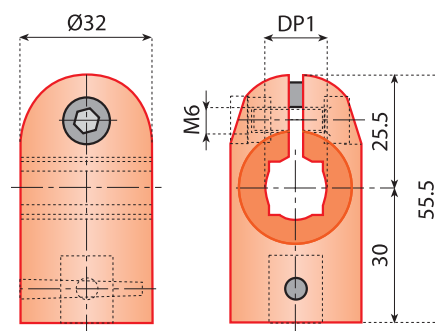
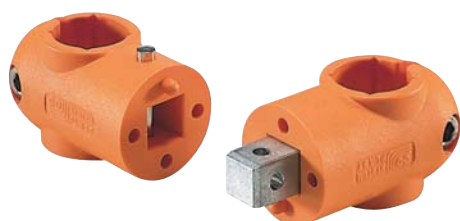


Code

131008



n°100



CROSS BLOCKS

Features: cross blocks, in a variety of bore configurations, including square bore combinations, are manufactured from reinforced polyamide.

Use: connects two round or square rods at 90°.

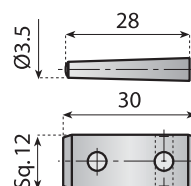
Material: reinforced polyamide with stainless steel bolts.

Supply: unassembled.

Code	DP1		
	●	■	
13666	14	12	n°100
13667	15	—	
13668	16	14	
13669	18	—	
13670	20	16	



n°100



CONNECTING JOINT AND PINS

Supply: separate two pins and one connecting joints.

Code

13671



n°100



Nickel plated brass

T - mobile clamp

Preferred type, readily available (codes marked in red)



AISI 304
Stainless steel



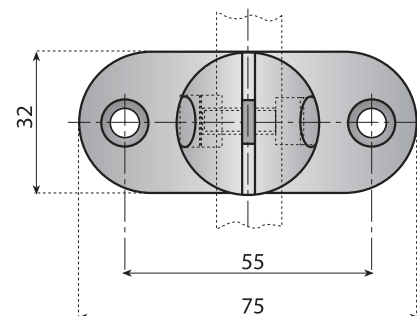
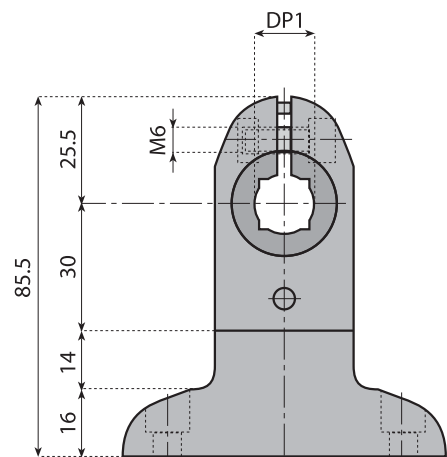
Nickel plated brass



Reinforced
polyamide



Accessories



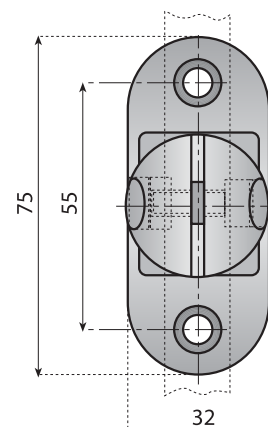
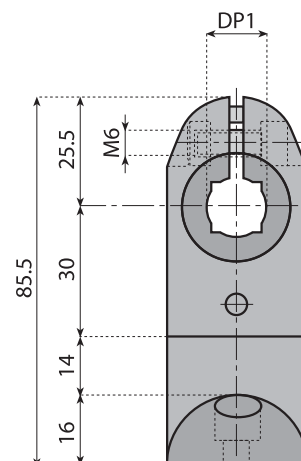
T-MOBILE CLAMPS

Features: mounts to side of equipment to provide support light duty rod type guide rail system.

Material: reinforced polyamide with stainless steel bolts; Internal connecting joints and pins in nickel plated brass.

Supply: assembled.

Code	DP1		
	●	■	
131010P	14	12	n°100
131011P	15	–	
131012P	16	14	
131013P	18	–	
131014P	20	16	



T-MOBILE CLAMPS

Features: mounts to side of equipment to provide support light duty rod type guide rail system.

Material: reinforced polyamide with stainless steel bolts; Internal connecting joints and pins in nickel plated brass.

Supply: assembled.

Code	DP1		
	●	■	
131010L	14	12	n°100
131011L	15	–	
131012L	16	14	
131013L	18	–	
131014L	20	16	